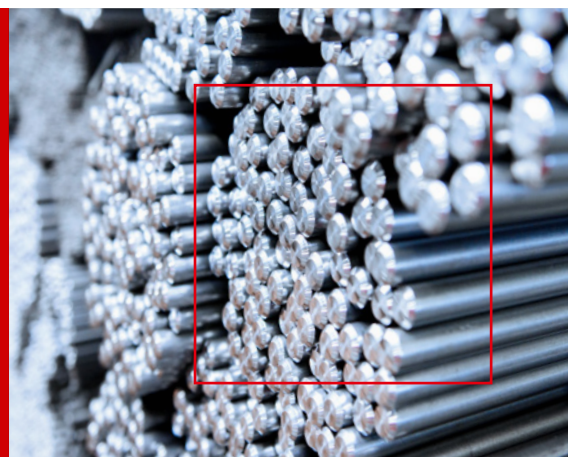


We supply tailor-made steel

Individually produced with the highest quality and short delivery times.



ONE OF OUR HALLMARKS: LONGSTANDING CUSTOMER LOYALTY

Longstanding customer loyalty is one of our main hallmarks. For good reasons, because we always carefully consider our customers' individual wishes and needs and our delivery times are among the shortest in our industry. No matter whether it is for a small, one-off product or steel bars machined with millimeter accuracy. You place your order and we will ship your products on the same or the next day, at the latest. This is how we fill our commitment to be exceptionally fast, exceptionally flexible and exceptionally versatile with life every day.

WE SUPPLY HIGH QUALITY

We not only supply high quality, we guarantee it. On request, we perform TÜV (German Technical Inspection Agency) approvals and ultrasonic tests. We demand the same high quality standards from our suppliers because we know that long-term relationships are a basic ingredient for the high quality we deliver to our customers. What else makes us stand out from the rest? We are certified to supply products in compliance with the technical rule AD-Merkblatt 2000-W0/W2/W7/W10 and the 2014/68 EU pressure equipment directive. We supply products US-tested according to all EN standards and technical delivery specifications for steel bar and bright steel. Our high- and cold-temperature steels are certified to EN 10204/3.2 and other standards, and we certify the dimensional accuracy of our products to ISO tolerances "h9/DIN ISO 286".

VERY SPECIAL STEEL

Due to their excellent material properties, our range of products in stock is the first choice for a great diversity of applications. On request, we can finish-machine the steel products ordered to give them a final touch. High-quality peeling with millimeter accuracy is one of our core competences and one of the many reasons why we are the leading stockholding steel trader for cold- and high-temperature steels in Europe.



AUTOMOTIVE



RENEWABLE ENERGY



FOSSIL ENERGY



ENERGY



**EARTHMOVING/
AGRICULTURAL
MACHINERY,
UTILITY VEHICLES**



**MECHANICAL AND
PLANT ENGINEERING**

We turn passion into steel

In 1993, we began turning our passion for steel into tailor-made products for our customers. We provide maximum flexibility, individuality and efficiency. This is why only very few steel traders in Germany can fulfill their customers' wishes as proficiently as we do.

HOT- AND COLD-TEMPERATURE STEELS

acc. to EN 10269, in compliance with DIN 17240/17280, acc. to techn. rule AD 2000 Merkblatt W 2/ 7W/ W 10, DGRL 2014/68 EU, approval acc. to EN 10204 3.1 and/or 3.2 TÜV

C 35 E	QT	W. 1.1181
Bright steel Tol.h9		10.68 - 52.13 mm
Steel bar EN 10060		32.00 - 83.00 mm

25 CrMo 4	QT	W. 1.7218
Bright steel Tol.h9		10.00 - 170.00 mm
Steel bar EN 10060		20.00 - 180.00 mm

21 CrMo V 57	QT	W. 1.7709
Bright steel Tol.h9		8.90 - 75.75 mm
Steel bar EN 10060		20.00 - 200.00 mm

40 CrMo V 4-6	QT	W. 1.7711
Bright steel Tol.h9		14.52 - 220.00 mm
Steel bar EN 10060		20.00 - 240.00 mm

X 22 CrMo V 12-1	QT	W. 1.4923
Bright steel Tol.h9		14.52 - 52.13 mm
Steel bar EN 10060		40.00 - 190.00 mm

42 CrMo 4	QT	W. 1.7225
Bright steel Tol.h9		10.68 - 59.75 mm
Steel bar EN 10060		22.00 - 70.00 mm

From 2024:

X 5 NiCrTi 2615	QT	W. 1.4980
Bright steel Tol.h9		14.52 - 52.13 mm
Steel bar EN 10060		40.00 - 115.00 mm

QT STEELS

acc. to EN ISO 898-1, FK 5.6 - 12.9, APZ acc. to EN 10204-3.1

S 355 J2G3	C+N	FK 5.6
Bright steel Tol.h9		10.00 - 36.00 mm

36 Mn6/36 CrB4	QT	FK 8.8
Bright steel Tol.h9		5.00 - 36.00 mm

42 CrMo 4	QT	FK 8.8
Bright steel Tol.h9		42.00 - 100.00 mm
Steel bar EN 10060		44.00 - 115.00 mm

42 CrMo 4	QT	FK 10.9
Bright steel Tol.h9		5.00 - 56.00 mm
Steel bar EN 10060		20.00 - 42.00 mm

34 CrNiMo 6	QT	FK 10.9
Bright steel Tol.h9		20.00 - 100.00 mm
Steel bar EN 10060		21.00 - 105.00 mm

30 CrNiMo 8	QT	FK 12.9
Bright steel Tol.h9		20.00 - 40.00 mm
Steel bar EN 10060		21.00 - 42.00 mm

42 CrMo 4	QT	FK 12.9
Bright steel Tol.h9		10.76 - 33.25 mm
Steel bar EN 10060		23.00 - 35.00 mm

QT STEELS

acc. to EN 10277-5/EN 10.083-3, WAZ 3.1

42 CrMo 4	QT	W. 1.7225
Bright steel Tol.h9		5.00 - 100.00 mm
Steel bar EN 10060		20.00 - 125.00 mm

34 CrNiMo 6	QT	W. 1.6582
Bright steel Tol.h9		16.00 - 95.00 mm
Steel bar EN 10060		20.00 - 100.00 mm

30 CrNiMo 8	QT	W. 1.6580
Bright steel Tol.h9		20.00 - 95.00 mm
Steel bar EN 10060		21.00 - 100.00 mm

BEARING STEELS

acc. to EN ISO 683-17/DIN 17230, APZ acc. to EN 10204-3.1

100 Cr 6 AC	W. 1.3505
Steel bar EN 10060	80.00 - 200.00 mm

STEEL GRADES

acc. to ASTM A 193/A 320/A 370 and EN 10269, APZ acc. to EN 10204-3.1

B7/L7/42 CrMo 4	QT
Bright steel Tol.h9	10.72 - 59.75 mm
Steel bar EN 10060	20.00 - 75.00 mm

B7/42 CrM 4	QT
Bright steel Tol.h9	42.00 - 100.00 mm
Steel bar EN 10060	44.00 - 115.00 mm

B16/40 CrMoV4-6	QT
Bright steel Tol.h9	14.52 - 145.00 mm
Steel bar EN 10060	20.00 - 200.00 mm

Your contacts

Jennifer Dietrich

T +43 (0)2302 91080-83

jennifer.dietrich@gmh-gruppe.de

Sebastian Picken

T +43 (0)2302 91080-86

sebastian.picken@gmh-gruppe.de



GeisslerWista GmbH
Bebbelsdorf 105
58454 Witten
www.gmh-gruppe.de